



Last Modified: 1/30/07

## Introduction

This manual is intended for system administrators, and will assist you with a variety of tasks, such as: installation, configuration, and troubleshooting. For basic application use and user functions, see the iChannel Lite User Manual.

### **iChannel Lite – Where does it belong?**

Evaluating the client's needs and potential growth are vital factors in determining if iChannel Lite is the solution. Typically, Lite will be an ideal product for small offices or those who cannot afford a Voice Solutions system at the moment. A host is needed to share Lite's central dictation directory on the network.

Below are specs for the user's PC. Also consider the section *Selecting a Dictation Directory* on page 4 for host requirements.

### **System Requirements**

Pentium III or Celeron processor  
256MB RAM  
Sound Card  
Windows 2000 or XP  
Available USB port  
20MB of hard drive space  
Connection to networked PC (or server) hosting dictation files

## **Installation**

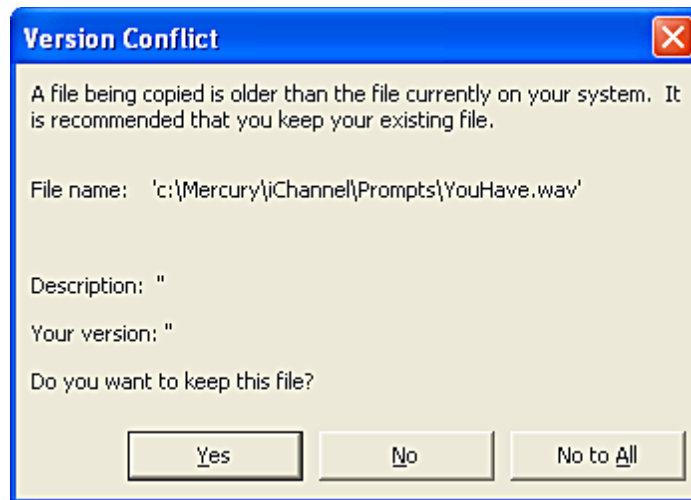
**Preface:** Outlined below are the steps to load iChannel Lite to the local PC of the user. Keep in mind that you may download the latest version of iChannel Lite at anytime from our FTP site at <ftp://www.dacsupport.com>. We can provide you with the username and password.

### **Using the Installation Setup**

**Step 1:** Using either the install CD that came with Lite, or the latest version of the install you downloaded, open the *Setup.exe* to begin. It is recommended that you do not change any of the defaults. If you get a version conflict (as the picture below shows), always choose **Yes**.

**Step 2:** Create a shortcut to the desktop. You can do this by *Right-Clicking* the executable and from the menu that appears, selecting **Send To>Desktop (Create Shortcut)**.

**Step 3:** Plug in the IN-DAC USB foot pedal to the PC. This specific foot pedal has the software license key embedded in its processor. Using a USB-1 standard USB foot pedal will only allow iChannel Lite to listen up to 25 seconds of each job.



**Step 4:** Upon launching iChannel for the first time, some basic configuration is necessary. See the Configuration section of the manual for further instructions.



Although it isn't always necessary, it is recommended that when you run the Setup - or the first time iChannel Lite is launched - you do so under the *Administrator* account, or one with administrative privileges. Failure to do so may produce error messages during the Setup, or when you first try to launch the application.

## Configuration

iChannel Lite offers a variety of audio settings you can configure to meet your needs. Start by going to **File>Settings** in the menu bar. You will get a window like the one on page 3.

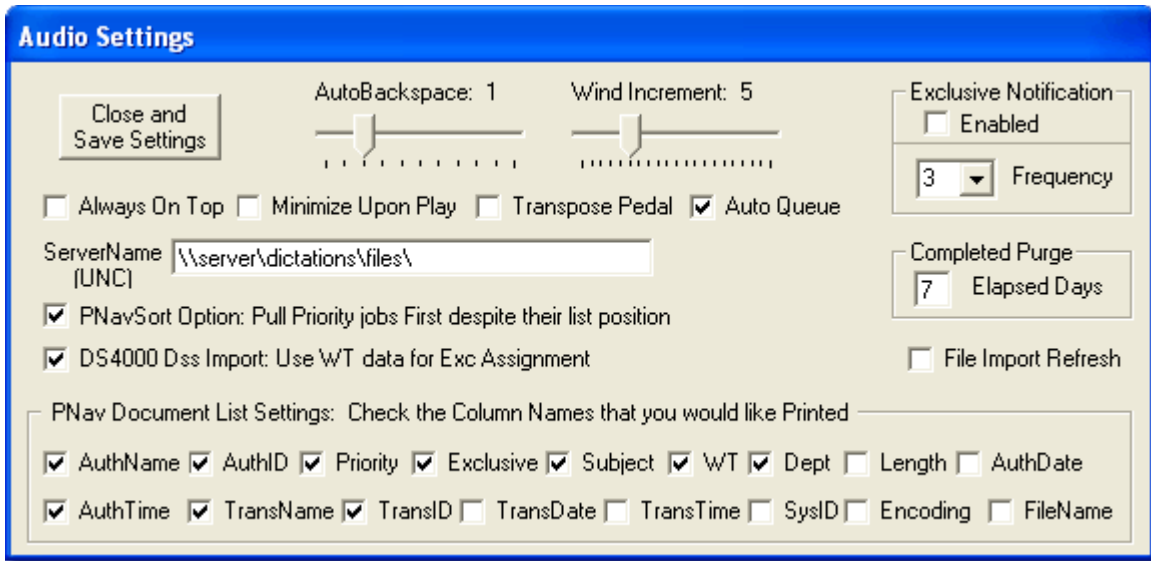
**AutoBackspace:** This determines (in seconds) how big of an increment the dictation will automatically backup each time you press Play. You may set it from 0 (disabled) to 5 seconds.

**Wind Increment:** This determines (in seconds) at what increment you will rewind or fast forward through a file. You may set it from 0 to 20 seconds.

**Always On Top:** When selected, the iChannel Lite window will always remain on top of other applications.

**Minimize Upon Play:** If checked, the iChannel Lite window will minimize to the taskbar when you begin to play the dictation.

**Transpose Pedal:** This will switch the Rewind/FastForward buttons on your foot pedal, making the right pedal FastForward, and the left pedal Rewind. Play is always the center pedal.



**Auto Queue:** If checked, iChannel Lite will automatically present you the next available job (should there be one) after you have *Signed Off* (finished transcribing) the current one.

**ServerName (UNC):** The path to iChannel Lite's shared dictation directory must be entered here. A typical path would be: [\\networkname\dictations\files](#) networkname being the UNC name of the PC hosting the dictation directory. See page 4, *Selecting a Dictation Directory* for more.



When you click **Close and Save Changes**, iChannel Lite will check for connectivity with the network share at the path you provided. If it is incorrect, or the share is not available, you will receive a prompt asking you to check your path.

**Exclusive Notification:** This enables the worklight feature that runs on your taskbar.

- **Frequency** - You can specify how often (in minutes) iChannel Lite checks for new jobs.

**PNavSort Option: Pull Priority jobs first despite their list position:** If checked, when using the *PNavSort* request option, jobs marked *Priority* will be pulled first, ignoring their position in the PNav list. When unchecked, jobs will be received *exactly* as they are shown in the list.

**DS4000 Dss Import: Use WT Data for Exc Assignment:** If dss files are being imported directly to iChannel Lite's central files directory, the DS-4000's WT (worktype) information will be used for the *Exc* (Exclusive Assignment) field thereby entering a 0 for *W* (worktype). Otherwise, the DS-4000's worktype would correspond to iChannel's *W* field and no exclusive assignments would be designated.

**Completed Purge:** You may enter a number from **1-30** in the *Elapsed Days* box. This determines the number of days a *Completed* job remains in the files directory before deletion. Each iChannel Lite may be set up individually, as the transcriptionist using iChannel with ID # 901, will only delete jobs that have been transcribed with that ID #.



**For example:** If a job is marked *Completed* on August 1 by # 901, with an *Elapsed Days* setting of 10, then the first time iChannel Lite is opened 10 days later (on August 11 or later) that job will be purged (deleted). However, if transcriptionist # 902 has an *Elapsed Days* setting of 20, and marks *Completed* a job on August 1, then the first time iChannel Lite is opened 20 days later (on August 21 or later) that job will be purged. The iChannel user with ID # 902 will not touch jobs *Completed* by # 901, and vice versa.

**File Import Refresh:** This relates to how .dss or .ds2 files are handled. When new files arrive in the central dictation directory, iChannel Lite converts them to a .eD2 when the user hits the [Refresh] button for the PNav. However, they must hit [Refresh] a second time for the files that have just been changed to .eD2 to then be displayed in the PNav. Checking this box will make Lite automatically refresh the PNav list and populate it with the new .eD2s after it is clicked the first time, instead of the second.

**PNav Document List Settings:** The boxes which are checked will determine which demographic fields will be present in the text file when the **Print PNav List** is used.

## Administrative Tasks

### Selecting a Dictation Directory

iChannel Lite uses a single directory (shared on the network) to store its dictation. Up to 10 transcriptionists can work from that directory. Files are marked *Completed* on a per individual user basis (see the *Completed Purge* preference above for more) and remain in this directory until deletion. Deciding where to host the central dictation directory is one of the most important aspects of configuration for Lite, especially if more than a few users will be accessing it. Here are some factors to consider when choosing the directory:

Processing speed

Hard Drive Space

Network Speed

Traffic (number of users)

1.) **Processing speed** of the host. The host should preferably be a server; possibly the network server, if one is present. However, whether the host is the PC of a transcriptionist or a server, its processing speed and current use are vital aspects for consideration. A Pentium III or higher is recommended, but whether that is sufficient or not depends on the load. A network server with 10 iChannel Lites requesting jobs and also handling a dozen lawyers uploading and downloading word documents will obviously need to be several times more powerful than a PC supporting one iChannel with no other secondary activity.

2.) **Hard Drive Space** of the host. The amount of dictation and the length of time you keep it (*Completed Purge* preference) will determine the space you will need available. Here are some file size guidelines to help you estimate your needs:

**DSS:** 100k per min / 1MB per 10 min / 60MB per 10 hours

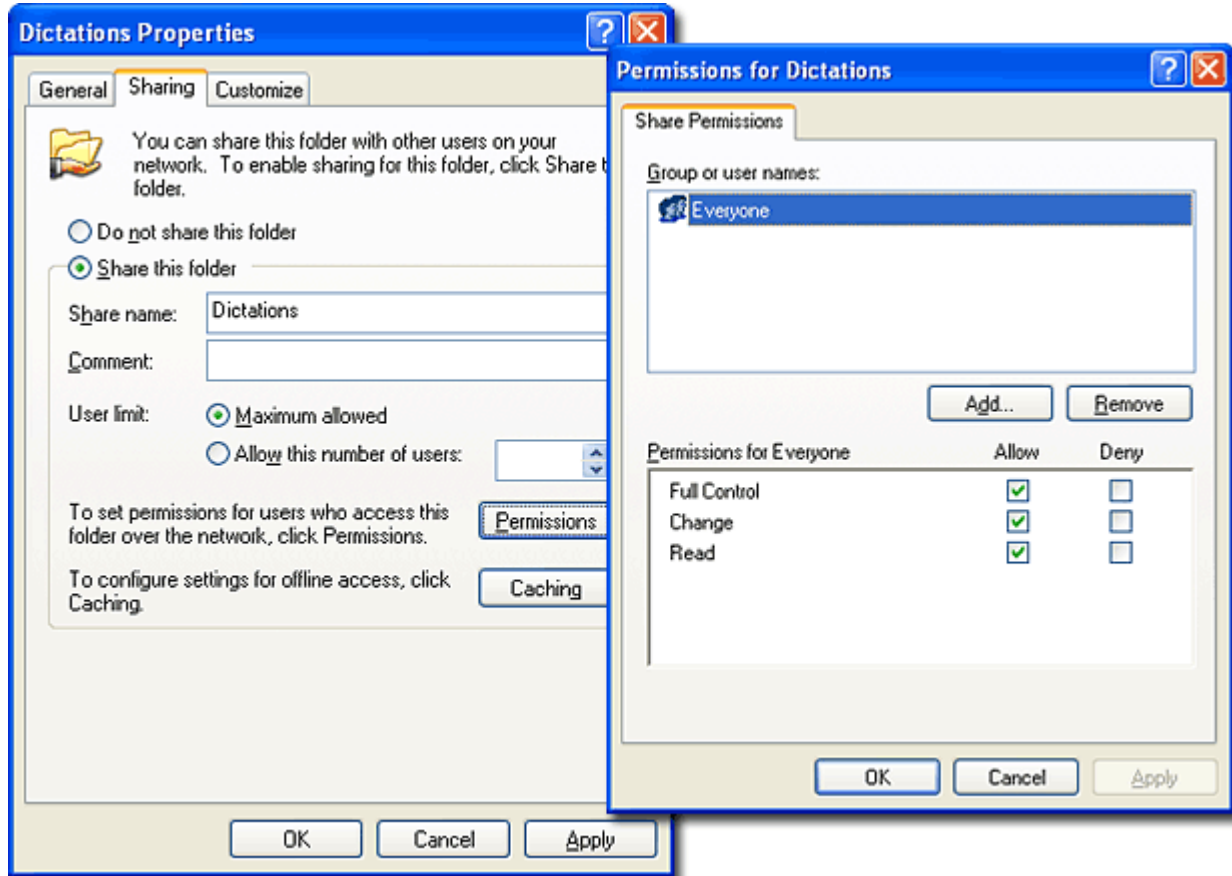
**Wave:** 1.2 MB per min / 12MB per 10 min / 720MB per 10 hours

3.) **Network Speed.** A 10/100 NIC or higher is needed for the host. If you have a large number of iChannel Lites and authors dictating large wave files, a more robust network server is a must. You may even find that the network server has too much bandwidth already being used for you to utilize it as a host. A lower-end dedicated workstation may be needed in such instances.

4.) **Traffic.** The OS on the host can prove to be a limitation. Although rarely see in businesses, if you were to make a Windows XP Home Edition the host, you are limited to 5 concurrent connections. Windows XP Professional is limited to 10 concurrent connections. Try to select a host that does not already have a large number of users constantly logging into the host.

## Windows Permissions & Sharing

Often overlooked, but an important aspect of configuration, is Windows security permissions with the central dictation directory. Any user, whether reading or writing to that directory, should have **[Full Control]**. Below is a screenshot of the **[Sharing]** tab in Windows XP on a FAT32 partition for the **dictations** directory's properties (you can get to this screen by right-clicking>Properties). We recommend that this directory be shared on the network. You may add the **[Everyone]** group and assign **[Full Control]**, or assign permissions based on a per user basis. If the partition is NTFS, you will also have a **[Security]** tab. You may also have to modify the NTFS permissions for the group/user(s) in addition to those on the **[Sharing]** tab.



Changing Sharing or NTFS permissions *always* requires administrative privileges. You may need to log into an administrator account to make such changes.

## Ways to set the ServerName UNC path:

- 1.) A typical DNS path would be: `\\networkname\dictations\files` networkname being the UNC name of the PC hosting the dictation directory.
- 2.) You may use the IP address of the host if necessary. An example of that would be: `\\192.168.1.10\dictations\files`
- 3.) Although not preferred, you could map a drive to the host. **IMPORTANT!** You must always have “files” at the end of the path. So, for example, a path of `\\networkname\dictations\files`, you could map a drive to `\\networkname\dictations`. The end result for iChannel Lite would be an UNC path that looks like `M:\files`.

## Compatible File Formats

- **Wave Files – PCDictate** has been fully integrated with iChannel Lite. The dictation is sent as a .eW2, which is a wave file format with job demographics in its file name. This will allow the *Author*, *ID*, *Exc*, *Subject*, *W*, and other fields to be populated.
- 
- **Wave Files** – Dictation from a **CD-ROM** can be converted to a wave file and then copied to the central dictation directory for transcription. In fact, any wave file regardless of its source may be copied and imported this way. iChannel Lite will attempt to populate the demographic fields with the filename, and will use defaults elsewhere (such as *Exc: 901*).
- 
- **DSS–DS4000** – Olympus DS4000 dss files may be sent directly to the central dictation directory. The portable's user ID can be used to provide demographic information for iChannel Lite. The ID is read from right to left. The *first 2 numeric digits* are taken as the **Exclusive Assignment (Exc)**, the *next 3* are the **ID**, and the alpha characters to its left will populate the **Author** demographic field. Notice some examples below of IDs and how Lite handles them.

DS4000 User ID	Author in Lite	ID in Lite	Exc in Lite
Jones00102	Jones	1	2 (or 902)
DrScott01015	DrScott	10	15 (or 915)
Nancy20580	Nancy	205	80 (or 980)



To get *Priority* status on a job in Lite, you may use the DS4000's Priority mark feature. For a detailed explanation of the DS4000's functions and a step-by-step tutorial on how to configure user IDs, work types and other preferences, see the *DS4000 Guide*, published by DAC.

### - Work types to set Exclusive Assignment (Exc)

In addition to the steps listed above for setting the user ID, you may configure the DS4000 to use work types. If the **DS4000 Dss Import: Use WT data for Exc Assignment** setting is checked in iChannel Lite, the work type selection can be used to select the exclusive assignment for each individual dictation. If you decide to implement this feature, when you program the user ID you will leave off the last two numeric characters that typically would

correspond to the **Exc** demographic. The user IDs should look something like the one below.

<b>DS4000 User ID</b>	<b>Author in Lite</b>	<b>ID in Lite</b>	<b>Exc in Lite</b>
Jones001	Jones	1	blank
DrScott010	DrScott	10	blank
Nancy205	Nancy	205	blank

The work types should follow the format of **##dashName** Below are some examples.

<b>Work Type ID</b>	<b>Exc in Lite</b>
01-Lisa	1 (or 901)
02-Ellen	2 (or 902)
10-Niki	10 (or 910)

**- Dsscore installation.**

In order for the dss files to play correctly in iChannel Lite, you *must install a copy of the Olympus Dictation Module on the user's PC running the application*. When you install this application, a necessary DLL is also installed. Without it, dss playback will not function. Any version of the Dictation Module will do.



Do NOT use the same License ID for more than one PC. If you install Dictation Module on the PC running iChannel Lite, with a License ID that has already been used, dss playback may not function properly. This is an Olympus security measure.

- **DSS–Grundig VS100** – You may use the VS100 (Grundig Digital Traveler) with iChannel Lite via the Voice Solutions' Transporter application. Using Transporter, all of the demographics will be created in the proper filename format for Lite to import. These jobs may be sent in the .ds2 file format directly to Lite's central dictation directory.

- **DSS–Philips 9450 and up** – For iChannel Lite to import demographics from the portable, a few **Keyword** fields must be set up. To do this, in the *DPM Download Configuration* application, go to the menu **Settings>DPM Configuration>Keyword Definition tab**. You will have a window like the one below, except the **Keyword** fields will be blank. If you want Author, Secretary (*Exc*), or Worktype (*W*), you must enter those headings in the **Usage** row, with the variable beneath in the **Content** row (see picture). One row may be entered to provide default demographics, or several for the user to toggle between various secretaries (exclusive assignments) and/or work types.

**- Author (Keyword 1)**

The *Author* name and *ID* for Lite can be entered under the **Author/Keyword 1** column. Lite reads the **Content** field, taking up to three numeric characters for the *ID* demographic, with the remainder being assigned to its *Author* demographic. The *Author* must **ONLY** consist of alpha characters.



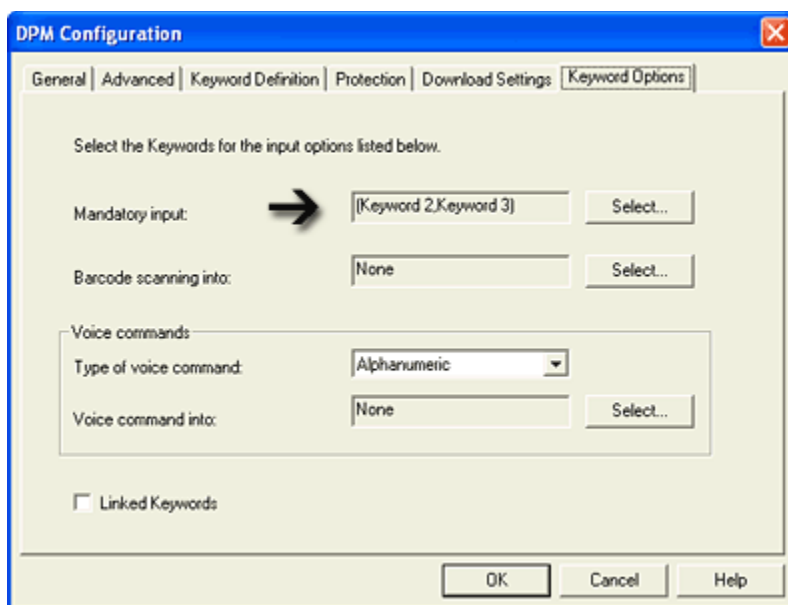
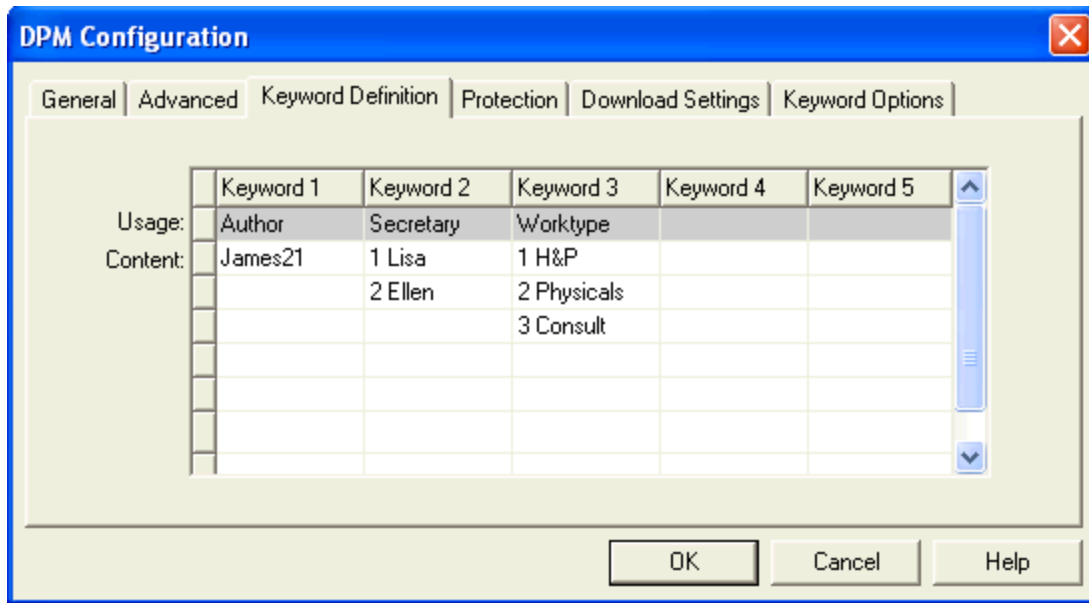
You do not need to enter three numeric characters if the *ID* is only one or two digits. For example, a person named James with an *ID* of 1, would be **James1**. If James had an *ID* of 15, it would be **James15**. If James had an *ID* of 120, it would be **James120**.

- **Secretary** (Keyword 2)

The secretary (or *Exc - Exclusive Assignment*) for Lite can be entered under the **Secretary/Keyword 2** column. Lite reads the **Content** field from left to right, taking *up to the first two numeric characters* for the *Exc* demographic. The remainder is ignored. You may enter a name after the numerics to make it easier for the user.



You **MUST** enter a **space** after the numerics preceding any additional characters. A dash (-), underscore (\_) or other various symbols will not suffice. See the picture below.



**- Worktype (Keyword 3)**

The worktype (or *W* field) can be entered under the **Worktype/Keyword 3** column. Lite reads the **Content** field from left to right, taking *up to the first two numeric characters* for the *W* demographic. The remainder is ignored. You may enter a name after the numerics to make it easier for the user.

If the user needs to choose a *secretary* or *worktype* for each job, you may go to the **Keyword Options tab** (see picture on page 8). In the Mandatory **input** field you may select which Keyword columns you desire to prompt the user to enter. For example, if you have *Keyword 2 & 3* as Mandatory inputs, then upon beginning a new dictation, the user will have to select a *secretary* and *worktype* from the options you created in their corresponding **Contents** row.

If no Mandatory inputs are selected, then after the Keywords have been written to the portable, you must set the defaults so each subsequent dictation will include that Keyword data in its file. These Keywords can be activated in the menuscreen options of the Philips portable. See your Philips user manual for additional instructions.

- **WMA Files** – Dictation from a WMA digital portable can be copied to the central dictation directory for transcription. In fact, any WMA file regardless of its source (given that it is not encrypted, has embedded graphics, or other additional data) may be copied and imported this way. iChannel Lite will attempt to populate the demographic fields with the filename, and will use defaults elsewhere (such as *Exc: 901*).

**File Extensions Used**

iChannel Lite will change the extension of a file to fit its status. In addition, the file format will also determine its extension. Below are the ones used.

<b>eW2</b> - Wave file with the <i>In Queue</i> status	<b>tW2</b> - Wave file with the <i>In Trans</i> status
<b>sW2</b> - Wave file with the <i>Saved</i> status	<b>cW2</b> - Wave file with the <i>Completed</i> status
<b>eD2</b> - DSS file with the <i>In Queue</i> status	<b>tD2</b> - DSS file with the <i>In Trans</i> status
<b>sD2</b> - DSS file with the <i>Saved</i> status	<b>cD2</b> - DSS file with the <i>Completed</i> status
<b>eU2</b> - uLaw file with the <i>In Queue</i> status	<b>tU2</b> - uLaw file with the <i>In Trans</i> status
<b>sU2</b> - uLaw file with the <i>Saved</i> status	<b>cU2</b> - uLaw file with the <i>Completed</i> status
<b>eE2</b> - Rhet32 file with the <i>In Queue</i> status	<b>tE2</b> - Rhet32 file with the <i>In Trans</i> status
<b>sE2</b> - Rhet32 file with the <i>Saved</i> status	<b>cE2</b> - Rhet32 file with the <i>Completed</i> status
<b>eM2</b> - WMA file with the <i>In Queue</i> status	<b>tM2</b> - WMA file with the <i>In Trans</i> status
<b>sM2</b> - WMA file with the <i>Saved</i> status	<b>cM2</b> - WMA file with the <i>Completed</i> status

## Personal Assistant

Personal Assistant is a separate executable located in iChannel Lite's *Temp* directory. It runs as needed in the background, performing various tasks. Some of these tasks are:

- **File purging.** Based on the *Completed Purge* setting, Personal Assistant runs each time iChannel Lite is launched and checks for jobs that meet the purge criteria.
- **File conversion.** Whenever iChannel Lite is launched, the user hits the PNav *Refresh* button, or the *Work Notification Frequency* causes an automatic refresh, Personal Assistant checks for new jobs that need conversion. The Assistant takes *.wav*, *.wma*, *.dss*, and *.ds2* files and changes the filename to match Lite's naming convention. It also changes the extension as well. Below is a list of conversions.

<i>.wav</i> > <i>.eW2</i>	<i>.dss</i> > <i>.eD2</i>
<i>.wma</i> > <i>eM2</i>	<i>.ds2</i> > <i>.eD2</i>

## Updates

In your central dictation directory, you will notice a folder called *Upgrade*. This is the folder that iChannel Lite looks to when you choose the **Check For Updates** option from the menu. If the version of Lite in the *Upgrade* folder is newer than the version the user is currently using, it will download and then install it the next time Lite is reopened. The original file(s) are moved to **C:\iChannel\Upgrade\Previous**, which resides on the user's local PC, should you need to revert to a previous version.



Only the executable (.exe) should be put in the *Upgrade* folder. The exe's name must be **iChannel-Lite.exe** for the upgrade to be successful. Thus, *iChannel-Lite 1.0.6* or *Lite 1.0.6* or any other naming convention will not work. If you also have an updated Personal Assistant, copy it to the *Upgrade* folder as well. It must be named **iChannel-PersonalAssistant-4DSS.exe** for it to be successful.

- **Check Dac Updates** - This will go to our Upgrade server and check for a new version of iChannel Lite (and the Personal Assistant). If an update is found, it will download the file and perform the upgrade the next time Lite is reopened.

## FAQ/Troubleshooting

**Q: A transcriptionist was assigned another's job by mistake or wishes to change the job's demographics (worktype, department, etc) . How do I do that?**

**A:** When this happens, you must first request the job, then if you *Right-click Return* (to return the job), you will be given the option of entering the ID number of the transcriptionist you want the job to be reassigned to. For example, if that person's ID was 904, you could type *904* or simply *4* in that field. You may also select a transcriptionist from the drop-down list. Other demographic changes (worktype, department, etc) may also be done at this screen.

**Q: iChannel Lite left a job marked as *In Transcription* and it will not allow the user to retrieve it now. How can I put it back as *In Queue* to receive and transcribe it again?**

**A:** Using the *PNav* view, and selecting *Browse Mode*, choose the *In Trans* option under the **Status** filter field. Click *Refresh*, and you will see a list of jobs marked as *In Trans* (In Transcription). Left-click the job which you wish to return to the queue and scroll all the way to the right until you see the *FileName* column in the PNav list. In this column, *Right-Click* the highlighted job (just as you would if you were going to choose the *Request* option) and select *Return to Queue*. Click OK to the warning screen that appears. You may now go about retrieving that job.

**Q: I received an error window *Please check your Source directory path for a valid 'Files' directory*.**

**A:** It can happen at two different times:

1. **Happens when you open the program** - You will get this error if the **ServerName (UNC)** path is incorrect or not accessible. Go to **File>Settings** to verify you have the correct path entered. If the path is correct, check to see if there is a network connectivity issue, either on the workstation's side, or the host's.
2. **Happens when you are setting the UNC path** - When in the **Settings** screen you click **Close and Save Changes**, iChannel Lite checks the validity of the path in the **ServerName (UNC)** box. You will get this error if the path does not exist, or is incorrect. If you entered that information for the first time, verify you typed it correctly. Otherwise check for network connectivity issues.



Remember that regardless of where iChannel Lite's central dictation directory will be hosted, the path must ALWAYS end with a folder called **files**. See *Picking a Dictation Directory* in this manual for more information.

**Q: iChannel runs fine under the PC's *administrator* user account, but I (receive errors)/(it won't respond) under other user accounts. Why?**

**A:** This is related to a Windows permissions issue. There are write restrictions, or (if on a domain)a restrictive group policy could be the culprit.

- 1<sup>st</sup>) Verify that the user account you are under has **Full Control** over the **iChannel** directory and the **Temp** directory located at the root of your C: drive. If any **Read Only** attributes are checked for those directories, they should be removed.
- 2<sup>nd</sup>) If that doesn't solve the problem, try promoting the user account to a local admin temporarily and see if the issue disappears. Often, you can remove the admin status from an account after iChannel is ran the first time and will not experience any further technical problems.
- 3<sup>rd</sup>) As a last resort, have the local network administrator remove that user/PC from the domain group policy. If the problem disappears, check which restrictions are being applied.

**Q: Why are the dss files showing up in the PNav with *bad format* for their demographics?**

**A:** This is caused by a dsscore issue.

1. You have not installed a copy of the Dictation Module on that user's PC yet. - **Solution:** Install a copy of the Dictation Module.
2. You installed a copy of the Dictation Module, but used the same License Key on more than one PC. - **Solution:** Uninstall the copy on that user's PC and reinstall with a License Key not already in use.
3. The dsscore DLLs have been deleted or are corrupt. - **Solution:** Reinstall a copy of the Dictation Module.

**Q: When requesting a dss file, I got an error message *In order to play DSS files you must first install the Olympus Software components. Please contact your Voice Solutions dealer for assistance.* What's wrong?**

**A:** This is caused by a dsscore issue.

1. You have not installed a copy of the Dictation Module on that user's PC yet. - **Solution:** Install a copy of the Dictation Module.
2. You installed a copy of the Dictation Module, but used the same License Key on more than one PC. - **Solution:** Uninstall the copy on that user's PC and reinstall with a License Key not already in use.
3. The dsscore DLLs have been deleted or are corrupt. - **Solution:** Reinstall a copy of the Dictation Module.



Copyright 2007 Digital Accessories Corp.