



This manual is intended for Voice Solutions system administrators, and will assist you with a variety of tasks, such as: installation, configuration, and troubleshooting. For basic application use and user functions, see the iChannel User Manual.

Minimum System Requirements:

Pentium III or Celeron processor
256MB RAM
Sound Card
Windows 2000 or XP
Network connection to Voice Solutions server

Installation

Preface: iChannel is located on the Voice Solutions server. There is a folder called *iChannel* located in the shared *Mercury* folder on the system. Outlined below are the steps to load iChannel from the server to the local PC of the user. Keep in mind that you may also download the latest version of iChannel at anytime from our FTP site at <ftp://www.dacsupport.com>. We can provide you with the username and password.

Method 1 – Using the Installation Setup

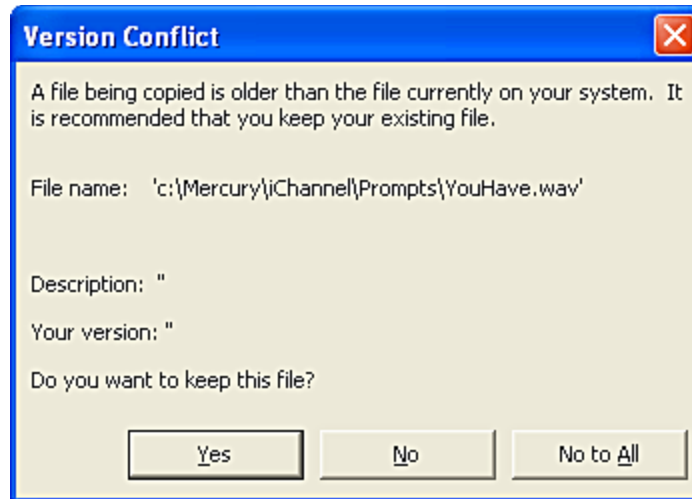
Step 1: Now locate the Voice Solutions network server from the local computer. Click on *Start*, then *Run*, type in `\\dac1`, and click OK. If the server is on the network you should see the shared *Mercury* folder. In the *Mercury* folder select the *iChannel Setup for XP* or *iChannel Setup for Win2000* folder, depending on the operating system of the target PC.

Step 2: Open the *Setup.exe* to begin the installation. It is recommended that you do not change any of the defaults. If you get a version conflict (as the picture below shows), always choose **Yes**. If the installation was successful continue to *Step 4 of Method 2* below.

Method 2 – Copying the files manually

Step 1: Create a folder in the **C:** directory on the local computer called **Mercury**.

Step 2: Now locate the Voice Solutions network server from the local computer. Click on *Start*, then *Run*, type in `\\dac1`, and click OK. If the server is on the network you should see the shared *Mercury* folder. Double click on the *Mercury* folder and look for the *iChannel* folder.



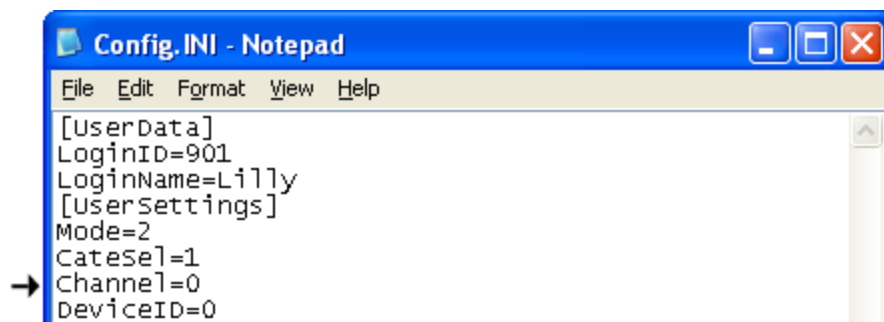
Step 3: Copy the *iChannel* folder to the *Mercury* folder on the local PC. **Note:** If you have an older VS server it may not include an *iChannel* folder. In that case you can download the latest version of *iChannel* at anytime from our FTP site at <ftp://www.dacsupport.com>. We can provide you with the username and password.

Step 4: Create a shortcut to the desktop. You can do this by *Right-Clicking* the executable - *iChannel-iPlayer* - and from the menu that appears, selecting **Send To>Desktop (Create Shortcut)**.

Step 5: Double-Click on the *Config.ini* file to open it. (This is the configuration file for *iChannel*). A few lines from the top you will find an entry reading "**Channel =**" (typically the default number is 0 as the picture below shows). This is the channel or path to the database. There are 24 channels.



You MUST ASSIGN a specific channel for each transcriptionist. We suggest you use a channel equal to the last one or two digits of the specific transcriptionist's ID. (As an example: Transcriptionist 901 = Channel 1 or Transcriptionist 910 = Channel 10.)



Step 6: Plug in the IN-DAC USB foot pedal to the PC. This specific foot pedal has the software license key embedded in its processor. Using a USB-1 standard USB foot pedal will only allow *iChannel* to listen up to 25 seconds of each job.

Step 7: Upon launching *iChannel* for the first time, some basic configuration is necessary. See

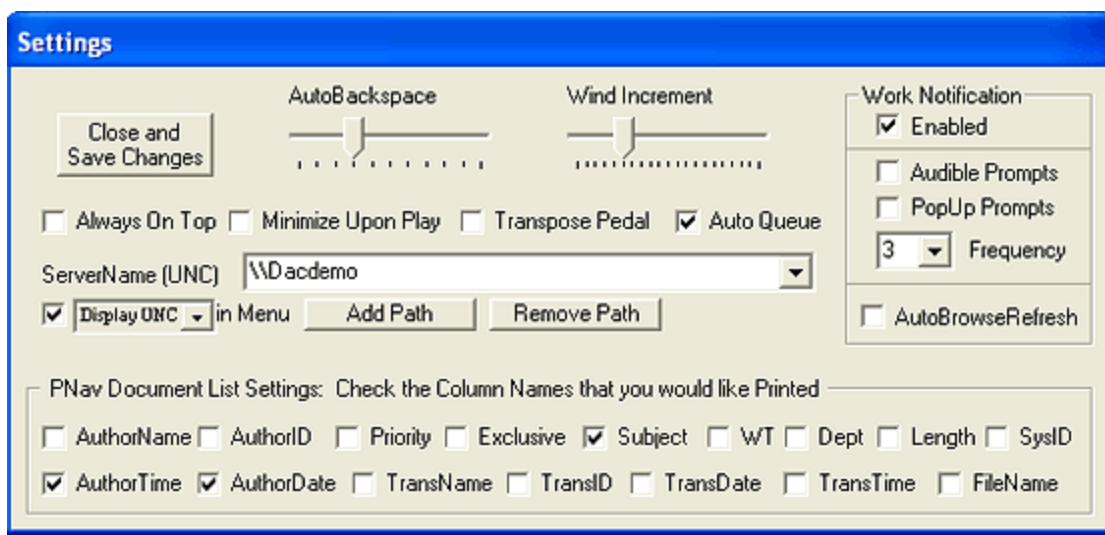
the Configuration section of the manual for further instructions.



Although it isn't always necessary, it is recommended that when you run the Setup - or the first time iChannel is launched - you do so under the *Administrator* account, or one with administrative privileges. Failure to do so may produce error messages during the Setup, or when you first try to launch the application.

Configuration

iChannel offers a variety of audio settings you can configure to meet your needs. Start by going to **File>Settings** in the menu bar. You will get a window like the one below.



AutoBackspace: This determines (in seconds) how big of an increment the dictation will automatically backup each time you press Play. You may set it from 0 (disabled) to 5 seconds.

Wind Increment: This determines (in seconds) at what increment you will rewind or fast forward through a file. You may set it from 0 to 20 seconds.

Always On Top: When selected, the iChannel window will always remain on top of other applications.



This does not apply to remote desktop applications, such as Terminal Services, Citrix, etc. These programs will cover iChannel, including the worklight on their taskbar.

Minimize Upon Play: If checked, the iChannel window will minimize to the taskbar when you begin to play the dictation.

Transpose Pedal: This will switch the Rewind/FastForward buttons on your foot pedal, making the right pedal FastForward, and the left pedal Rewind. Play is always the center pedal.

Auto Queue: If checked, iChannel will automatically present you the next available job (should there be one) after you have *Signed Off* (finished transcribing) the current one. **Note:** This is

applicable to jobs requested by *Exclusive*, *FIFO*, or *Categorized*, NOT *Specific*.

ServerName (UNC): The path to the Voice Solutions server must be entered here. A typical path would be: \\dac1
Dac1 being the server's UNC name. You may also use the IP address of the server if necessary. An example of that would be: \\10.0.21.1

When you have entered the server path, you can click **Add Path** to save that path to the drop down window. You may save several server paths, and likewise delete a selected one with **Remove Path**.



When you click **Close and Save Settings**, iChannel will check for connectivity with the server at the path you provided. If it is incorrect, or the server is not available, you will receive a prompt stating so.

(Display UNC) in Menu: If checked, on the main iChannel screen, a line to the right of the menubar will read *Connected on *server's UNC**, given that the connection is active. This allows you to quickly verify if you are currently connected, and if so, to which server. You may also choose from the drop down menu the option **Short UNC** (will only show **server's UNC** instead), or **No Display** (disables connection info from being displayed).

Work Notification: This enables prompts to inform you when new exclusively assigned work is available for transcription.

- **Audible Prompts** - This provides you with an audible prompt, stating that a new job has arrived.
- **PopUp Prompts** - This provides you with a PopUp that informs you a new job has arrived
- **Frequency** - You can specify how often (in minutes) iChannel checks with the system for new jobs.



Setting the frequency high (such as 1 minute) can cause iChannel to occasionally suffer delays to user commands (ex. such as foot pedal inputs) as it communicates with the Voice Solutions server. This delay - if there is one - is dependent on your server connection speed. It's recommended that you experiment to find the best frequency for your network bandwidth.

PNav Document List Settings: The boxes which are checked will determine which demographic fields will be present in the text file when the **Print PNav List** is used.

Other Administrative Tasks

Although not necessary, below are some additional features that provide more customization for your setup.

Upgrades

In the *Mercury folder* on your Voice Solutions server, you will notice a folder called *Upgrade*. This is the folder that iChannel looks to when you choose the **Check For Updates** option from the menu. If the version of iChannel in the *Upgrade* folder is newer than the version the user is currently using, it will download it from the server and install it the next time iChannel is reopened.



Only the executable (.exe) should be put in the Upgrade folder. The exe's name must be **iChannel-Player.exe** for the upgrade to be successful. Thus, *iChannel-Player 1.0.6* or *iChannel 1.0.6* or any other naming convention will not work.

Transcriptionist User Profiles

With iChannel, it's possible to create a user profile for a transcriptionist with access restrictions as well as a password prompt to log on. These features are actually part of the System Manager.

Passwords: In your Voice Solutions System Manager, go to the Transcriptionist Profiles. Under the *General* tab you will see a field for a *4 digit, numeric* password. When the user logs into iChannel, a password prompt will appear, just as is the case when this field is configured for hard wired stations.

Permissions: In your Voice Solutions System Manager, go to the Transcriptionist Profiles. Under the *General* tab is a *Title* field. A **blank field** for *Title* will allow the user to access all system jobs through PNav, regardless of the exclusive assignment (the typical configuration for most clients). Entering the following words into the field (words are case sensitive) will assign their corresponding permissions to that user.

- **Supervisor** - This provides the user with full access to all jobs. Ultimately, it is the same as leaving the field blank, except a Supervisor can also **review jobs** that are **marked In Trans** (currently being transcribed) **and Saved** by another transcriptionist. To make use of this feature, you must use the PNav to list the jobs and Right-Click the desired job bring up a menu. The last option will be *Supervisor Review* (this option does not appear in the menu unless you are a *Supervisor*).



A Supervisor account is also needed to modify the *WT* (worktype), *Dept* (Department), and *Subject* demographic fields when doing a **Special-Return**.

The screenshot shows a software interface for configuring a transcriptionist profile. The window title is "Transcriptionist: 901 Grooms". At the top left, there are "Add" and "Delete" buttons. Below them is a "Find by" section with a "Name" dropdown set to "Grooms", a "User ID" dropdown set to "901", and a "Scrolling" control. Below this, it says "Total Transcriptionists: 7". At the bottom left, there is a "Transcriptionist Profile" section with "Memorize" and "Clone" buttons. The main area on the right has tabs for "General", "Options", "Advanced", and "Annotation". The "General" tab is active, showing fields for "User ID" (901), "Title" (Restricted), "Name, last" (Grooms), "Name, mid" (empty), "Name, first" (Lisa), "Phone", "Fax", "Email", and "Password" (masked with "xxxxx").

- **Restricted** - A user with this permission may only view with Pnav, and transcribe jobs, assigned to their ID.

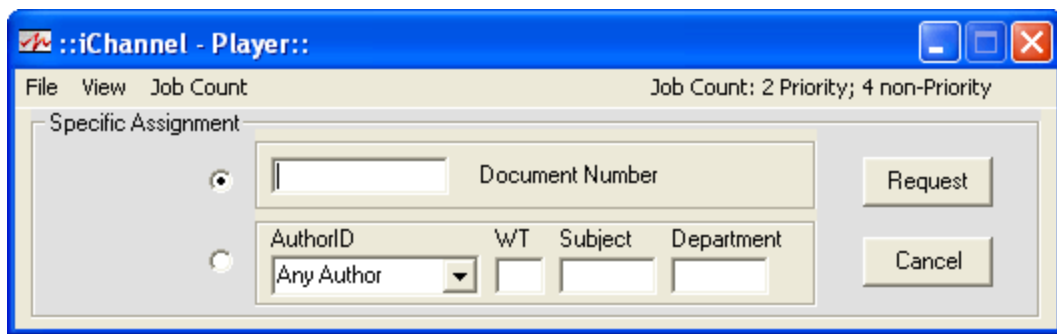
- **Reviewer** - User can access all jobs, regardless of exclusive assignment through PNav, but **cannot Save or Complete (Sign Off)** jobs.
- **RestrictReview** - Like a Reviewer, this user **cannot Save or Complete (Sign Off)** jobs. However, only jobs exclusively assigned to this user's ID can be accessed and reviewed.

Request Restrictions

In your Voice Solutions System Manager, go to the Transcriptionist Profiles. Under the *Options* tab, in the box **Document Retrieval Modes**, you have the 5 Request Modes for iChannel. By default all five (*Exclusive Assignment*, *Category*, *Specific*, *Fifo*, and *Your Saved Documents*) are checked. However, unchecking one of the Retrieval Modes will gray that mode out from any iChannel logged in with that transcriptionist ID. For example: unchecking *Category* and *Fifo* for ID 901 will only allow that transcriptionist to use iChannel's *Exclusive*, *Specific*, and *Saved* request modes.



Under the **Specific** heading, you will notice five additional boxes (*Document Number*, *Author ID*, *Worktype*, *Subject*, and *Department*). These boxes correspond to the *Specific* request filters in iChannel, as seen in the screenshot below. Unchecking any of these boxes will gray the corresponding iChannel field out. In addition, unchecking *Document Number* will disable the ability to double-click a job in PNav to request it.



The "Specific" Request Screen

Config.ini Modifications

For the most part, you will rarely need to modify the *Config.ini*. However, there are a few entries under the **[Special]** heading that you will find useful to customize. Below is a screenshot of these lines. The *Config.ini* is located in the iChannel directory and can be modified with the application *Notepad*, available on all Windows PCs.

PNavDoc= The variable entered here will determine what is displayed in the first column of iChannel's PNav. In the example above, we have the variable of **Job**. This means that instead of displaying **Doc** in the column (as is the default), **Job** will be substituted. Any alpha variable may be entered, with capitalization recognized.

PNavSubject= The variable entered here will determine what is displayed in the sixth column of iChannel's PNav. In the example above, we have the variable of **Subject**. This is the default. However, depending on the customer, you may wish to enter a variable such as **Client**, or **Patient**. Any alpha variable may be entered, with capitalization recognized.

PNavAuthorOrder= When you use PNav in *Browse Mode*, by default the users under the *Author* drop menu will be sorted alphabetically. To keep this setting, an entry of **0**, as the example above shows, should be used. However, if you would rather have the users sorted in the *Author* menu by their ID #, put a entry of **1**.

```
PNavMode=1
DisplayUNCinMenu=Display UNC in Menu
PNavView=6330
CollisionCheck=1
AudiblePrompt=0
[Special]
PNavDoc=Job
PNavSubject=Subject ←
PNavAuthorOrder=0
StartSentinel=0
```

FAQ

Q: A transcriptionist received another person's work. How do I fix that?

A: When this happens, if you *Right-Click Return* (to return the job back to the server), you will be given the option of entering the ID number of the transcriptionist you want the job to be reassigned to. For example, if that person's ID was 904, you could type *904* or simply *4* in that field. You may also select a transcriptionist from the drop-down list.

Note: The ID you are logged in with must have appropriate security permissions assigned to their profile for this to be possible.

Q: iChannel left a job marked as *In Transcription* and will not allow the user to retrieve it again. How can I change its status back to *In Queue* again to resume proper retrieval?

A: Using the *PNav* view, and selecting *Browse Mode*, choose the *In Trans* option under the **Status** filter field. Hit *Refresh*, and you will see a list of jobs marked as *In Trans* (In Transcription). Highlight the job which you wish to return to the queue and scroll all the way to the right until you see the *FileName* column in the *PNav* list. In this column, *Right-Click* the highlighted job (just as you would if you were going to choose the *Request* option) and select **Return to Queue**. Click OK to the warning screen that appears. You may now go about retrieving that job as usual.

Q: I received an error window "An Error '3704' occurred attempting to connect to source 'path-you-typed' Please check your path."

A: When in the **Settings** screen you click **Close and Save Changes**, iChannel checks the validity of the path in the **ServerName (UNC)** box. You will get this error if the server cannot be found at that path. If you entered that information for the first time, verify you typed it correctly. If you had not altered the path, check with your system administrator as there is a network connectivity issue, either on your workstation's side, or the server's.

Q: I was given a *The File Manager is not responding* audible error. What's wrong?

A: 1) You may not have a currently working network connection. 2) There is a problem with the system server. The File Manager could be frozen or have been accidentally closed, requiring you to relaunch it. 3) The ServerName (UNC) path in your Settings may be incorrect.

Q: Why are the WT, Dept, and Subject job demographic fields grayed out, preventing me from making changes when I do a Special Return (by right-clicking the Return button)?

A: This user must have a **Supervisor** profile set for them to have the appropriate permissions to do so. See the *Transcriptionist User Profiles* section above for further information.

Q: iChannel has locked up. It won't respond to any of my requests.

A: Quit iChannel and restart it. If it will not close from the menu, or you may need to go to your task manager. To do this, press and hold CTRL-ALT-DEL to bring task manager to the screen. If using XP, you must select the *Task Manager* button from the popup. Click the *Applications* tab, and find the *iChannel- Player* entry in the list below. Highlight it by left clicking, and hit the *End Task* button on the bottom of the window.

Q: Every time I request a job or hit *Refresh* for PNav, iChannel stops responding.

A: Quit iChannel and restart it. You may need to use Task Manager to do so (refer to the previous question for a step by step). If restarting iChannel does not solve your problem, try restarting Windows. If problems still persist, the server's File Manager may need to be restarted.

Q: iChannel will not load. I get an error before the main screen even shows.

A: Typically any error you get that prevents iChannel from loading is from the configuration file being corrupt. Locate and delete the file. It's in your iChannel directory, which should be located at **C:\Mercury\iChannel**. In that folder there is a file named **Config.INI**, or if you have extensions hidden on your PC, you will simply see **Config**. Delete this file and open iChannel. If it loads correctly, you will now need to reconfigure your settings (such as **ServerName**, **ID**, and **TransName**), as the defaults will be present.

Q: Why does the foot pedal take several seconds to respond? Often iChannel will continue playing a dictation after the user has taken their foot off play.

A: This relates to the **Frequency** setting for **Work Notification**. Sometimes, a setting of 1 (for 1 minute) will be too often for a slower network. When iChannel queries the server's database for new jobs, it is unable to process additional commands, such as letting off the foot pedal. The query typically is fast enough that no delay is noticed. However, on a busy or slower network the server response could be anywhere from a fraction of a second to several. Raising the frequency to a higher number may solve the issue, otherwise you may have to disable notification all together.

Q: I just installed iChannel and when I request a job it never loads. The play, stop and other typist buttons appear but no length is available.

A: Typically this is related to a Windows permissions issue. Sometimes this can happen if iChannel was not installed under an administrative account, or if it was, there are write restrictions.

1st) Verify that the user account you are under has **Full Control** over the **iChannel** directory and the **Temp** directory located at the root of your C: drive. If any **Read Only** attributes are checked for those directories, they should be removed.

2nd) Check for a **12345.wav** and a **12345-del.wav** file in the iChannel\Temp directory and delete them.

3rd) If errors still persist, it could be a sound card driver problem. Test your card by playing an audio file through Windows Media Player.

Q: iChannel runs fine under the PC's *administrator* user account, but I (receive errors)/(it won't respond) under other user accounts. Why?

A: This is related to a Windows permissions issue. There are write restrictions, or (if on a domain) a restrictive group policy could be the culprit.

1st) Verify that the user account you are under has **Full Control** over the **iChannel** directory and the **Temp** directory located at the root of your C: drive. If any **Read Only** attributes are checked for those directories, they should be removed.

2nd) If that doesn't solve the problem, try promoting the user account to a local admin temporarily

and see if the issue disappears. Often, you can remove the admin status from an account after iChannel is ran the first time and will not experience any further technical problems.

3rd) As a last resort, have the local network administrator remove that user/PC from the domain group policy. If the problem disappears, check which restrictions are being applied.

Q: I am getting a *Run-time error '5': Invalid procedure call or argument* error when trying to return, save, or sign off a job. What am I doing wrong?

A: You will get this error if you have renamed the Voice Solutions server to an unconventional Windows name. By default our Voice Solutions' servers are named *dac1*. However, often times it is necessary or desired to rename the server when installing it on a client's network. When you do so, keep in mind that you may use any variation of letters (A-Z) and numbers (0-9). Do NOT use any other type of character, such as the underscore (_), dash, and etc. Although Windows may allow those characters and a variety of other symbols, you will run into errors as our database is not written to accept entries with anything besides alphanumerics.